

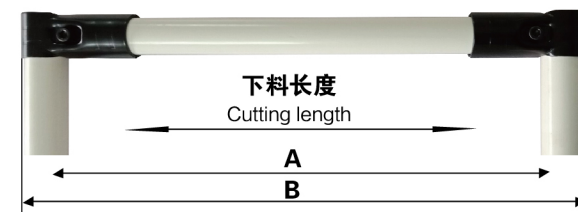
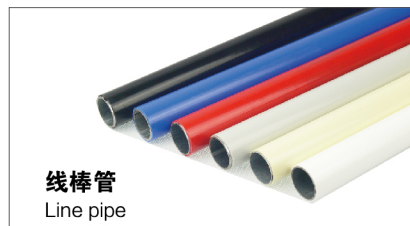
线棒 (又称精益管或覆塑管)

Lean pipe(Plastic coated pipe)



线棒管 (精益管) 技术说明 Technical Instructions for Line Bar Pipe(Lean Pipe)

Material / 材料	外部塑料层 / plastics + 中间钢管 / steel tube + 内部防锈涂层 / rust proof layer
outer diameter / 外径	φ 28mm
Inside diameter / 内径	φ 21.6mm~24mm
Thickness / 钢管壁厚	0.8mm、1.0mm、1.2mm、1.5mm、2.0mm
Colour / 颜色	白 / White、黑 / black、红 / red、黄 / yellow、蓝 / blue、绿 / green
Specifications / 规格	L=4000mm



塑钢管长度=外尺寸B-103mm=中中心距尺寸A-70mm
Plastic pipe length = outer dimension B-103mm = center-to-center distance dimension A-70mm

测试参数

Test parameter

长度 length	壁厚 length	0.8mm	1.0mm	1.2mm	1.5mm	2.0mm
400mm		165kgf	215kgf	260kgf	305kgf	365kgf
900mm		85kgf	100kgf	135kgf	180kgf	220kgf
1000mm		78kgf	100kgf	120kgf	140kgf	170kgf
1100mm		75kgf	97kgf	112kgf	133kgf	165kgf
1300mm		65kgf	84kgf	104kgf	101kgf	134kgf
1500mm		55kgf	70kgf	85kgf	86kgf	101kgf

备注:

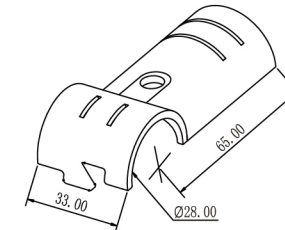
- 1、以上承载为理论承载量;
- 2、承载环境为常温常压, 空气酸碱度为中性;
- 3、上述默认材质为Q235B, 允许挠度变形为L/180;
- 4、测试速度小于5mm/分钟;
- 5、承载结构为简支梁结构。

Remarks:

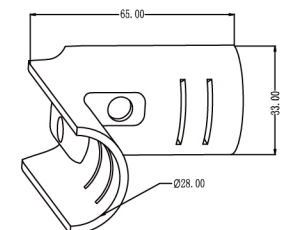
- 1, the above load is the theoretical load;
- 2, the carrying environment is normal temperature and pressure, and the air pH is neutral;
- 3, the above default material is Q235B, allowing deflection to L/180;
- 4, the test speed is less than 5mm / minute;
- 5, the bearing structure is a simple support beam structure.

接头分电泳、镀锌、镀铬

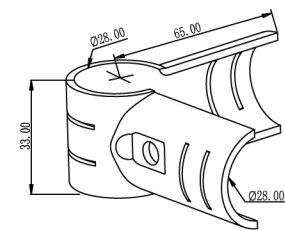
Joint electrophoresis, galvanizing, Chrome plating



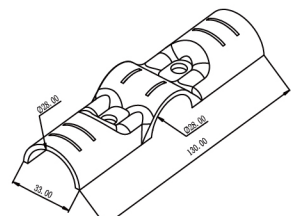
Model/型号	H-1
Name/名称	Single joint/单接头
Material/材质	SPCC/冷轧钢
Weight/重量	64g/2.3~2.5mm



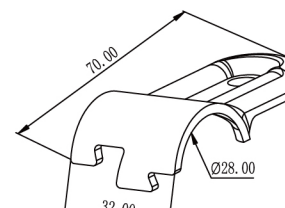
Model/型号	H-2
Name/名称	Single joint/单接头
Material/材质	SPCC/冷轧钢
Weight/重量	85g/2.3~2.5mm



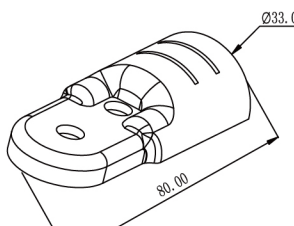
Model/型号	H-3
Name/名称	Single joint/单接头
Material/材质	SPCC/冷轧钢
Weight/重量	113g/2.3~2.5mm



Model/型号	H-4
Name/名称	Single joint/单接头
Material/材质	SPCC/冷轧钢
Weight/重量	102g/2.3~2.5mm



Model/型号	H-5
Name/名称	Single joint/单接头
Material/材质	SPCC/冷轧钢
Weight/重量	41g/2.3~2.5mm



Model/型号	H-6
Name/名称	Single joint/单接头
Material/材质	SPCC/冷轧钢
Weight/重量	55g/2.3~2.5mm